

Bethel Township

Parks & Open Space Plan • Shaffer Park Master Plan

Public Meeting #1

Thursday, April 27, 2023

7:00 – 9:00 PM

The live presentation will start promptly at 7:00 PM. Please note this presentation is being recorded.

During the presentation, please type questions into the Q&A box. Questions will be answer during the Q&A segment.

If you are listening by phone, we ask that you remain muted – instructions will be provided on how to ask questions during Q&A.

Welcome!

Thank you for your time this evening.

- Meeting format:
 - Presentation: Project Overviews
 - Public Brainstorming Sessions
 - In-person
 - Virtual – Please raise the “hand” icon.
 - Next Steps
 - Public Closing Thoughts Comment
 - In-person
 - Virtual – Please raise the “hand” icon.



Meeting Agenda

- Introductions
- Project Team & Experience
- Project Schedule
- **Parks and Open Space Plan**
 - Project Scope
 - Planning Process
 - Existing Data
 - Site Photo Tour
 - Brainstorming & Discussion
- **Shaffer Park Design**
 - Project Scope
 - Plan Process
 - Existing Data
 - Site Photo Tour
 - Concept Review
 - Brainstorming & Discussion
- Next Steps



Steering Committee

Giovanna Iacono	Bethel Township Supervisor
Michael Schneider	Bethel Township Vice Chairman
Jason Fletcher	Parks & Rec Board, Vice Chair
Kristina Lamia	Parks & Rec Board, Chairperson
Chuck Dennie	Parks & Rec Board, Member
Stephanie DerOhannessian	Bethel Township, Member
Michael Dunn	Planning Commission Member
George Lincoln	Planning Commission Member



Project Team

Peter Simone, RLA, FASLA, Principal
psimone@simonecollins.com

Emma Haley, Project Manager
ehaley@simonecollins.com

Liz Krohn, Staff LA
ekrohn@simonecollins.com



Simone Collins' Experience

- Primary Focus: Parks, Recreation & Trails
- 33 years in service, Simone Collins founded in 1990
- Principals offer 45+ years experience each
- 45 Design Awards – local, state, national
- Experience with communities across PA
- Trusted partner/ consultant to DCNR
- Total Park Projects Completed: 130+



South Bethlehem Greenway

Simone Collins Philosophy

Simone Collins Landscape Architecture is a planning and design firm committed to creating an ecologically enduring society.



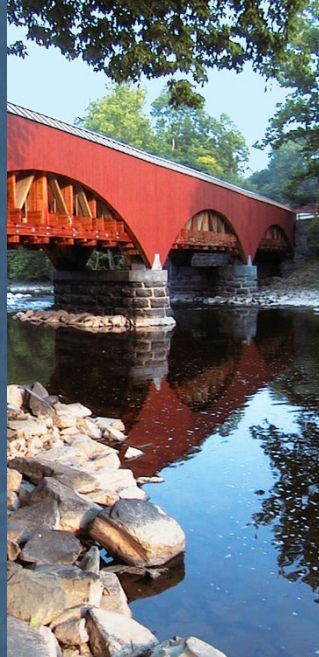
Conduct

careful research.



Respect

ecological context
and limits of each
site.



Build

on sustainable
practices of the
past.



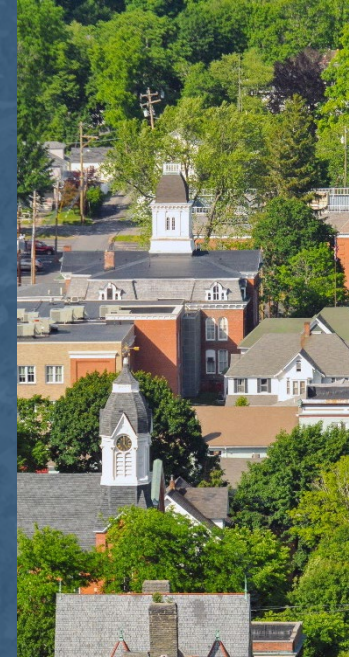
Employ

new methods
prudently.



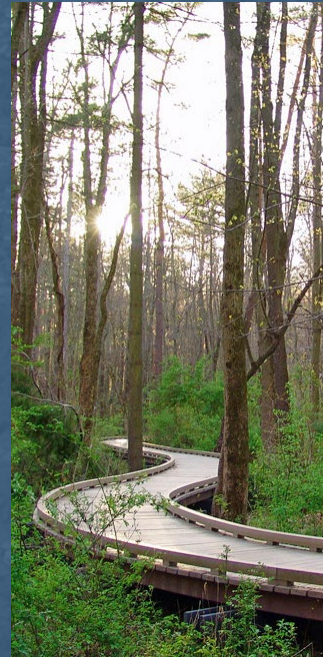
Conserve

materials and
energy.



Support

local economies.



Design

biologically &
culturally diverse
communities.

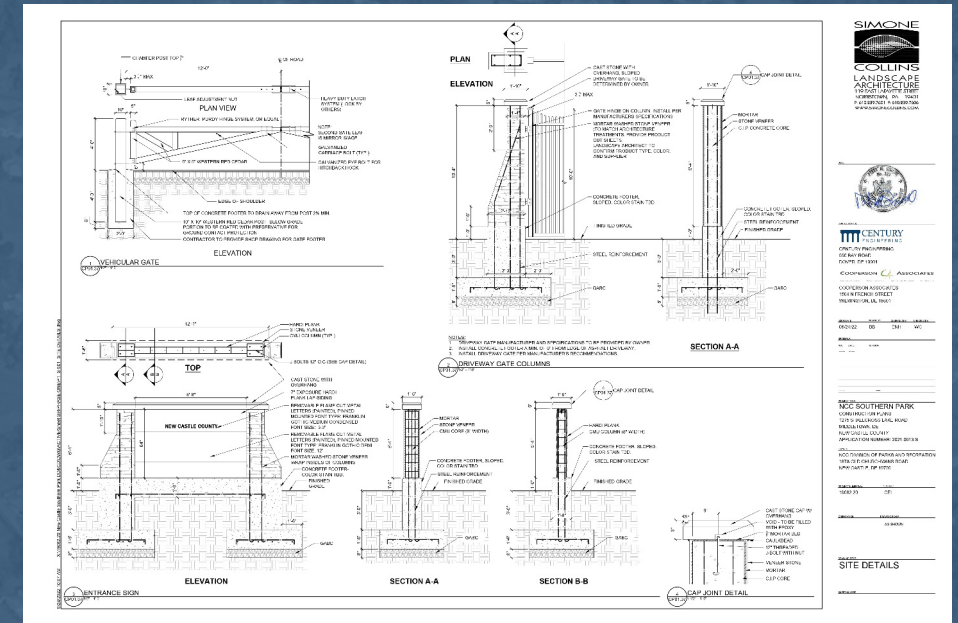
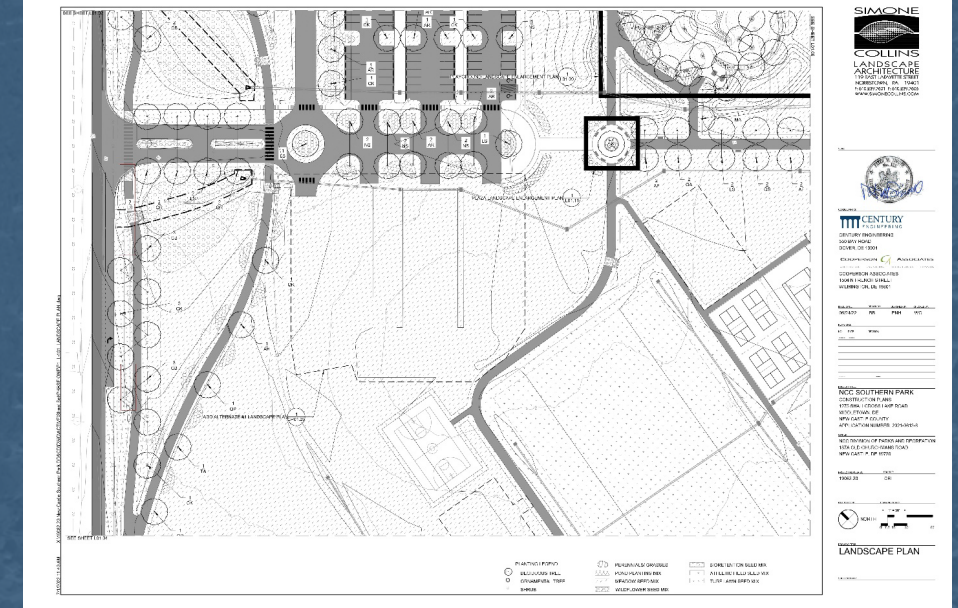
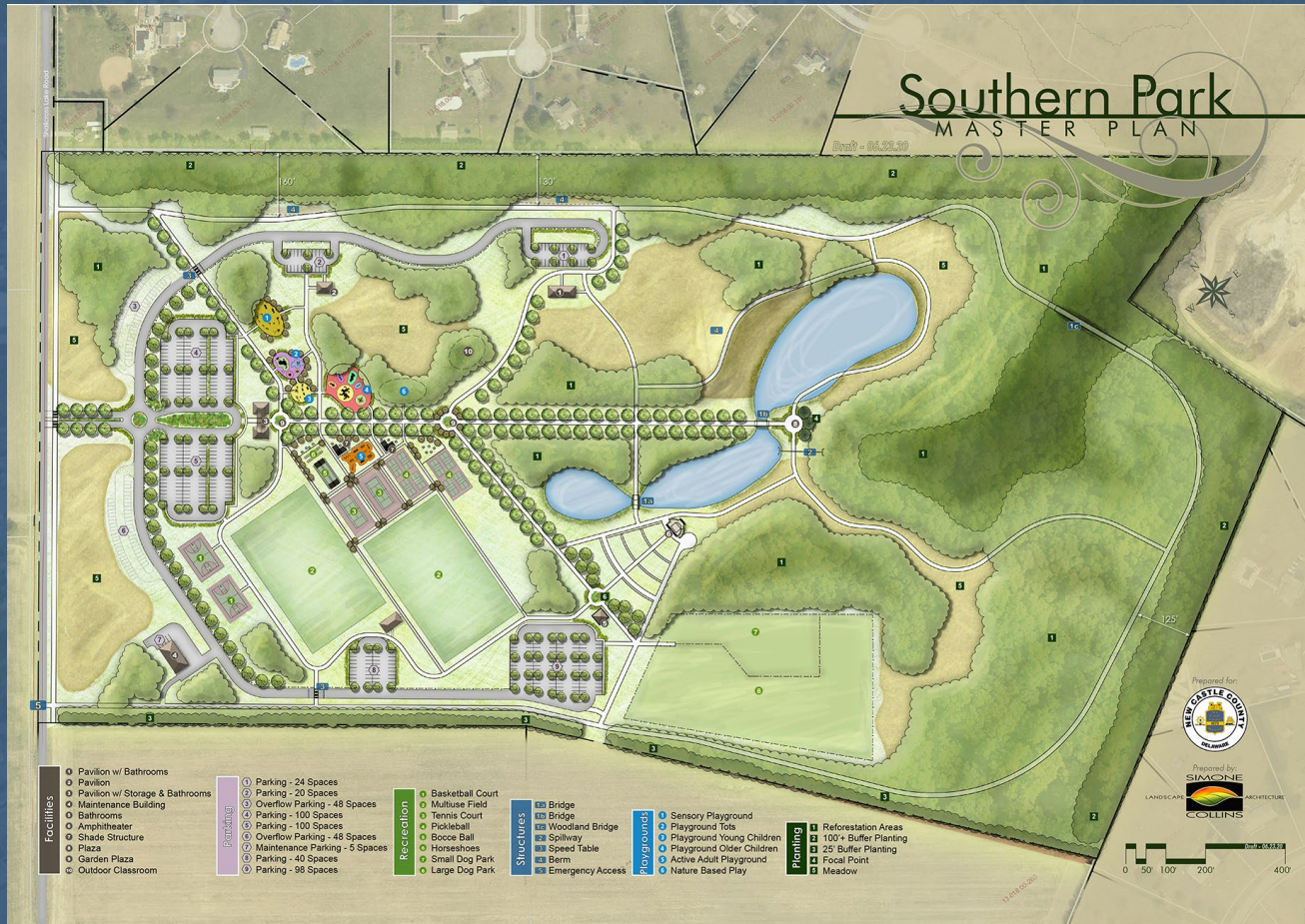
Experience

Perkiomen Township Highland/Huber Park Master Plan Small passive park with trail system



Experience

New Castle County, DE Southern Park Master Plan + Construction Documents



Project Schedule

Bethel Township - Parks & Open Space Plan and Shaffer Park Design

Project	Meeting Type	Purpose	Date	Time
Parks & Open Space Plan / Shaffer Park	Committee Meeting #1	Planning & Design Process Overview Brainstorming	Thursday, March 16	7 – 9 PM
	Key Person Interviews		Dates TBD	
	Web Based Survey		4/27/23 through 2/1/24	
Parks & Open Space Plan / Shaffer Park	Public Meeting #1	Concept, Programming & Brainstorming	Thursday, April 27, 2023	7 – 9 PM
Parks & Open Space Plan / Shaffer Park	Committee Meeting #2	Work in Progress Reviews	Thursday, June 8, 2023	7 – 9 PM
Shaffer Park	Public Meeting #2	Pre-final Concept	Thursday, August 24, 2023	7 – 9 PM
Parks & Open Space Plan	Committee Meeting #3	Initial Concepts Preview	Thursday, November 9, 2023	7 – 9 PM
Parks & Open Space Plan	Committee Meeting #4	Draft Plan Preview	Thursday, February 8, 2024	7 – 9 PM
Parks & Open Space Plan	Public Meeting #2	Initial Concepts	Thursday, March 21, 2024	7 – 9 PM
Shaffer Park	Board of Supervisors Meeting #1	Design Review	Tuesday, September 12, 2023	7 – 9 PM
Parks & Open Space Plan	Board of Supervisors Meeting #2	Draft Plan Review	Tuesday, April 9, 2024	7 – 9 PM
Parks & Open Space Plan	Board of Supervisors Meeting #3	Final Plan Review	Tuesday, June 11, 2024	7 – 9 PM

Parks and Open Space Plan

Components of a Parks & Open Space Plan

- Evaluation of existing parks, with recommendations for improvements
- Evaluation of other lands for parks or preserved open space
- Recommendations for non-motorized trails / sidewalks to and from these facilities



Why Plan?

- To meet **current needs** and **future growth** of Bethel Twp parks, open space, and recreation system.
- Community park facilities are **essential green infrastructure** that provide physical, spiritual & health benefits.
- Make the community **attractive** to residents and businesses.
- Create a **planning tool** to guide Township decision-making for 10 to 20 years – to improve facilities, preserve open space, and enhance recreational programming, maintenance and staffing.



Township park and recreation facilities are the most visible component of local government.

Residents interact with their Township through parks and recreation more than any other facility/ program.

Project Scope

PARKS AND OPEN SPACE PLAN

- Purpose, Goals, Objectives
- Site Reconnaissance
- Inventory & Analysis
 - Benchmark Similar Communities
 - Assessment – Facilities & Programming
- Public Participation
 - 4 Committee Meetings
 - 2 Public Meetings
 - Key Person Interviews
 - Public Opinion Survey (4/27/23 – 2/1/24)
- Design Process & Recommendations
 - Maintenance Assessment
 - Priorities
 - Draft Plan – 60 Day Review
 - Cost Estimates
 - Final Plan



Planning Process



Transparent Public Outreach Process:

- 2 Public Meetings
- 4 Steering Committee Meetings
- 2 Board of Supervisors Meetings
- Web-based Public Opinion Survey
- 2-Month Draft Plan Review Period
- Total Public Access to the SC Team During the Master Plan Process

Web-Based Public Opinion Survey

- The survey is a tool to take the pulse of the community. It is not a vote.
- Please take and share the survey with friends and organizations!



<https://qrco.de/Bethel-RecPlan-Survey>

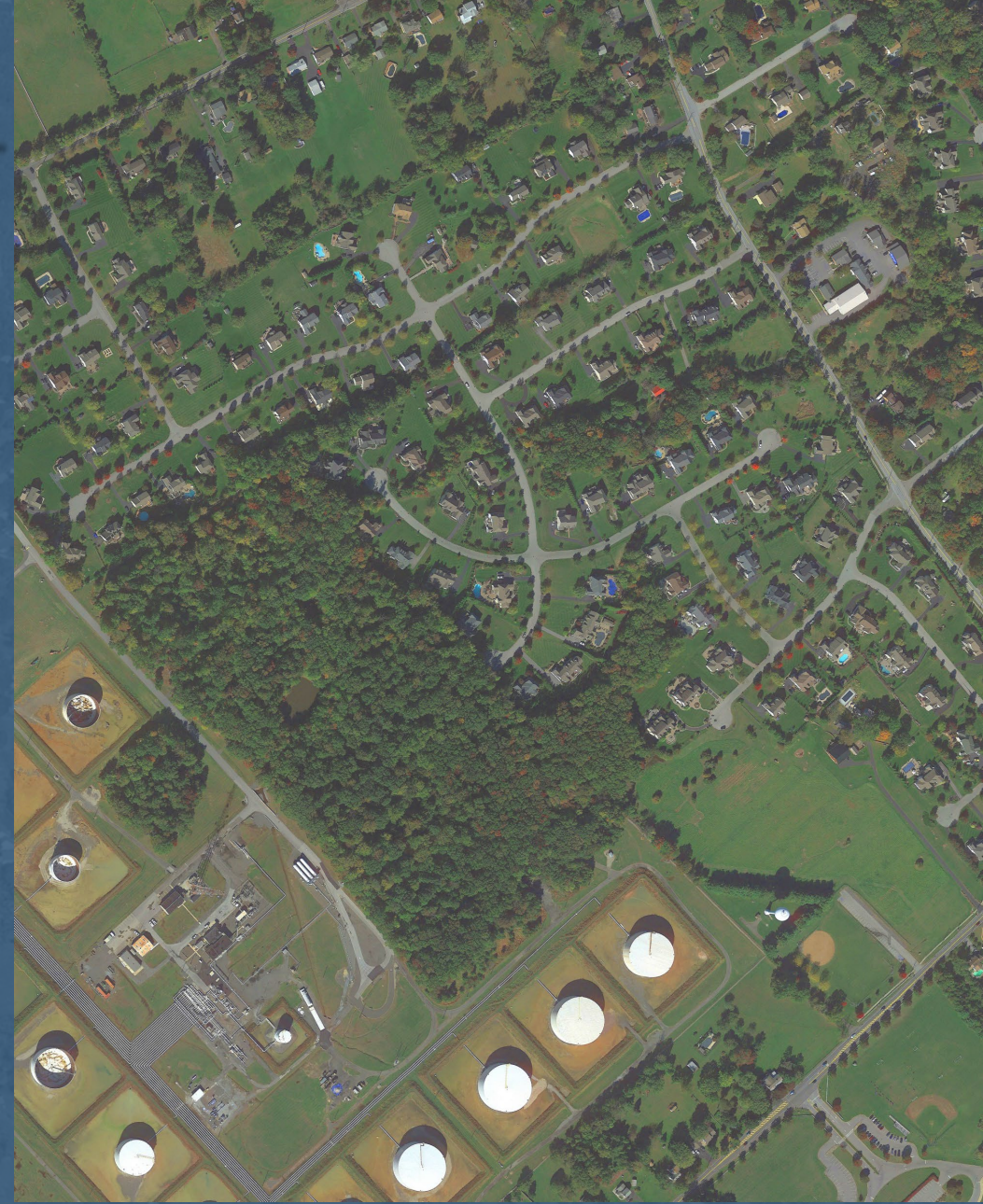
Key Person Interviews

The SC team will conduct Key Person Interviews following Public Meeting 1.

Key person interviews are with 1 to 3 people with specific knowledge or concerns regarding the planning process.

Key Person Interviews will include:

- Bethel Police
- Local Emergency Responders
- School District
- Recreation and Sports Associations
- Fraternal Organizations



EXISTING DATA

Parks & Open Space Plan

Current & Prior Planning Initiatives

The team will review and understand current & prior planning documents.

These include but are not limited to:

- 2006 Bethel Comprehensive Plan
- 2035 Delaware County Land Use Policy Framework Plan
- 2015 Delaware County Open Space and Recreation Plan
- 2015 Delaware County Countywide Greenway Plan
- 2050 New Castle County, DE, Comprehensive Plan
- 2008 Concord Township Open Space and Recreation Plan Update
- 2011 Delaware County Natural Heritage Inventory



Potential Connections

- Committee and Township preliminary planning to interconnect Bethel's public spaces
- Utilize HOA land and Buckeye Pipeline Tank Farm land

Plan courtesy of Charles Dennie and Jason Fletcher

Concord Twp
Bush Hill Farm
& Dog Park

Concord Twp
Property

Buckeye
Pipeline Tank
Farm Property

Bethel Springs

John Adkinson
Park



Clayton County
Park

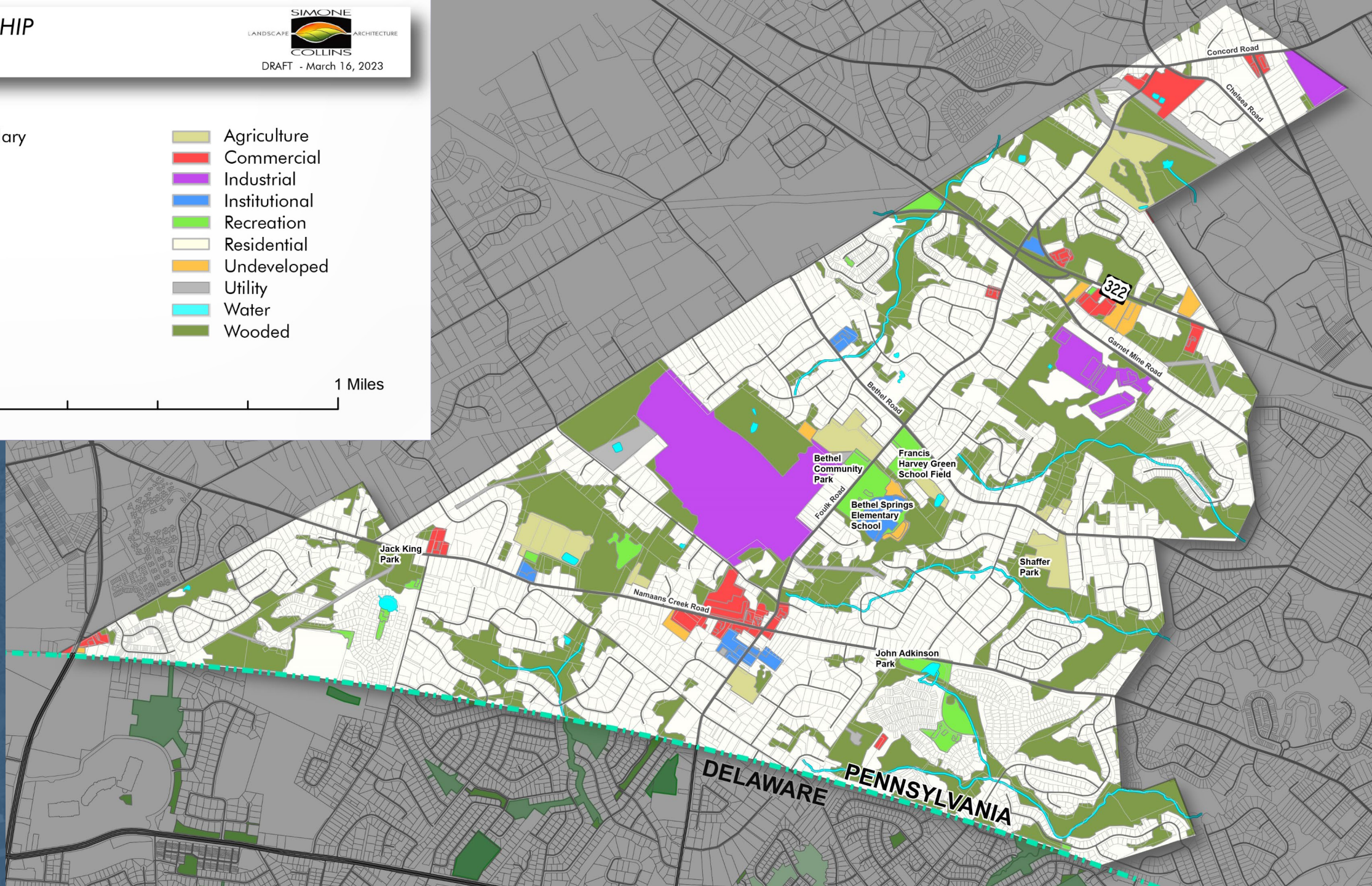
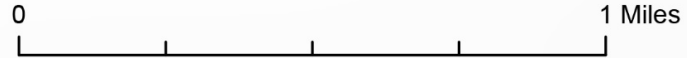
Bethel
Community
Park

Francis Harvey
Green School
Field

Shaffer Park

HOA Land

SIMONE
LANDSCAPE ARCHITECTURE
COLLINS
DRAFT - March 16, 2023



Inventory of Existing Recreation Facilities

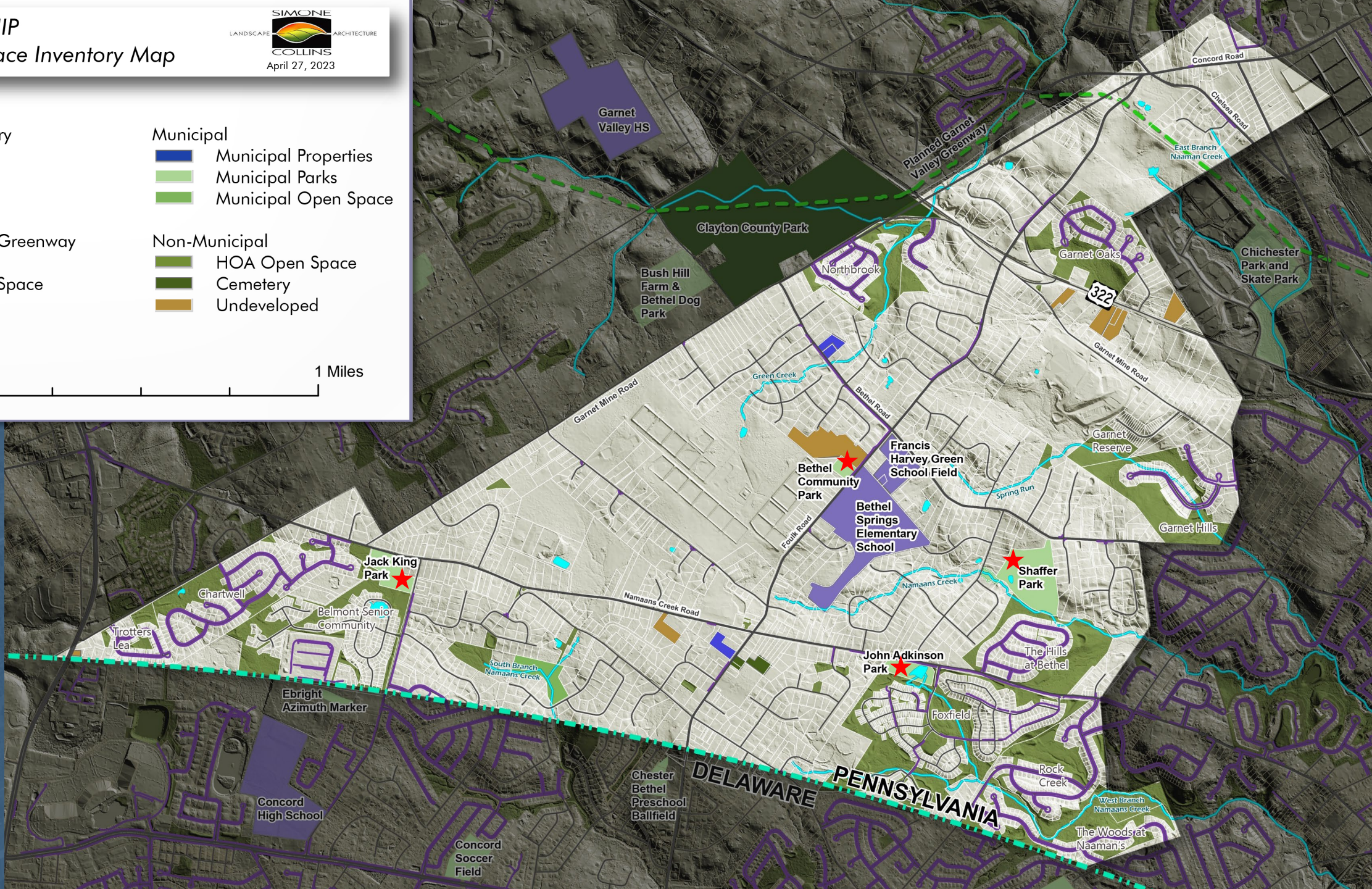
Consider all lands that contribute to the Recreational and Open Space needs of the Bethel community.

These Include:

- Township Parks & Open Space
- Township Owned & Undeveloped Land
- School District Lands
- Private Open Space (HOA, other)
- Cemeteries
- County Trails
- County Parks & Open Space
- Private Recreation Providers



SIMONE
LANDSCAPE ARCHITECTURE
COLLINS
April 27, 2023



Recreation Inventory

Park Name	Acres	Type			Paths/Trails		Parking		Facilities									
		Active Rec.	Private Open Space	Public Open Space	Walk	Nature Trail	Regular	ADA	Baseball	Softball	Soccer	Basketball	Playground	Pavilion	Picnic Tables	Benches	Bleachers	Pond
Municipal																		
Bethel Community Park/ Foulk Road Baseball Field	2.69	X					58	2	2							X		
Jack King Park	8.6	X			X		27	2					X		X	X		
John T. Adkinson Park	6.31	X			X		25	2						X	X	X		1
Shaffer Park	23.83			X			0	0										1
South Branch Namaan Creek	16.73			X			0	0										
HOA																		
Garnet Oaks	31		X															
Northbrook	33		X															
Garnet Reserve	22		X															
Garnet Hills	40		X															
The Hills at Bethel	34		X															
The Woods at Naaman's	34		X															
Rock Creek	36		X															
Foxfield	79		X															
Belmont Senior Community	37.5		X															
Chartwell	20		X															
Trotters Lea	6		X															
Schools																		
Bethel Road Park/ Francis Harvey Green School	7.43	X					20	0	1								X	
Bethel Springs Elementary School	22.85					X	380	14	1	1	2	1	2					

BETHEL TOWNSHIP
Hydrology Map



Parcel Boundary

Roads

Streams & Ponds

Floodplain

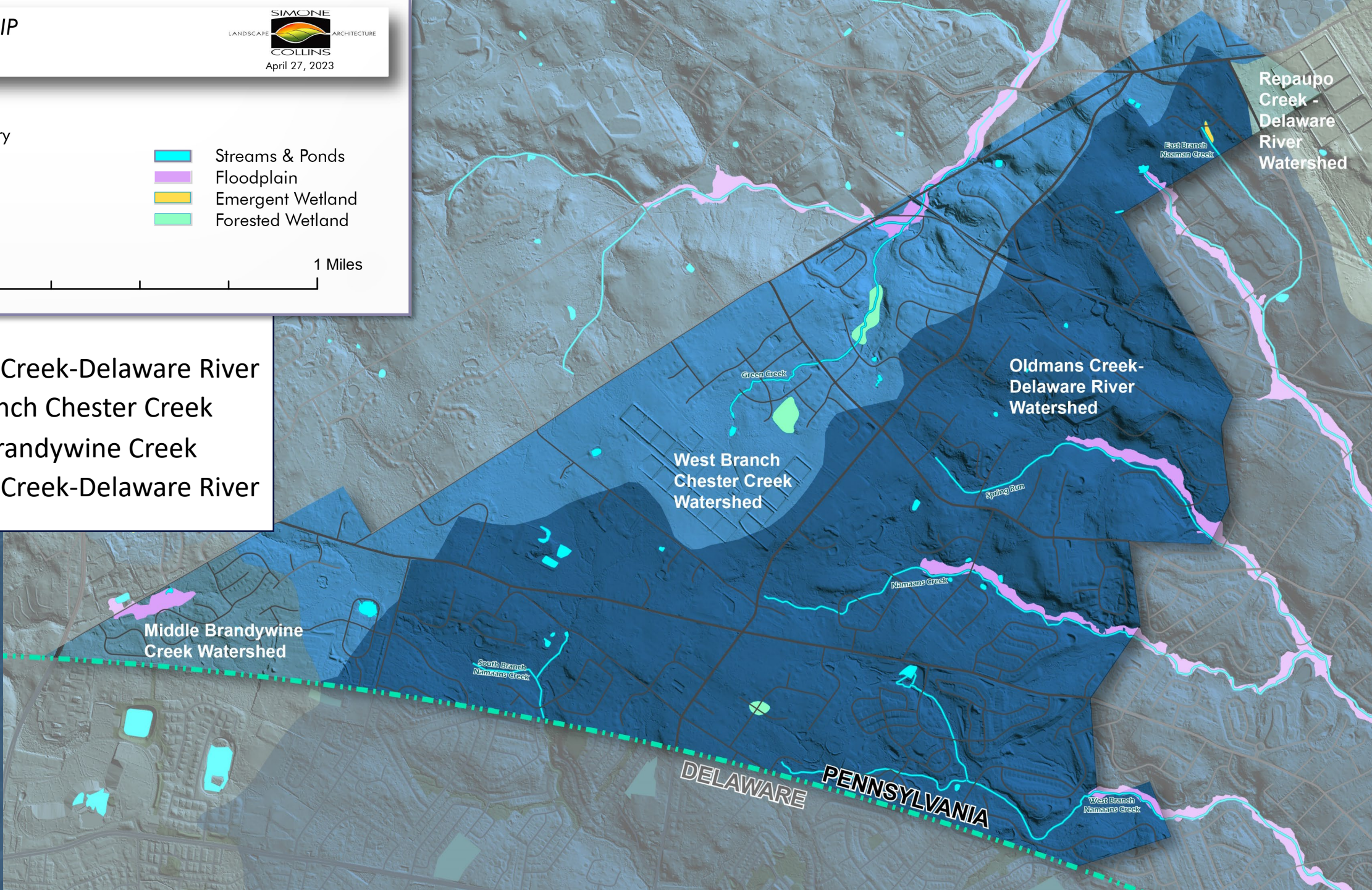
Emergent Wetland

Forested Wetland

N

01 Miles

- Oldmans Creek-Delaware River
- West Branch Chester Creek
- Middle Brandywine Creek
- Repaupo Creek-Delaware River



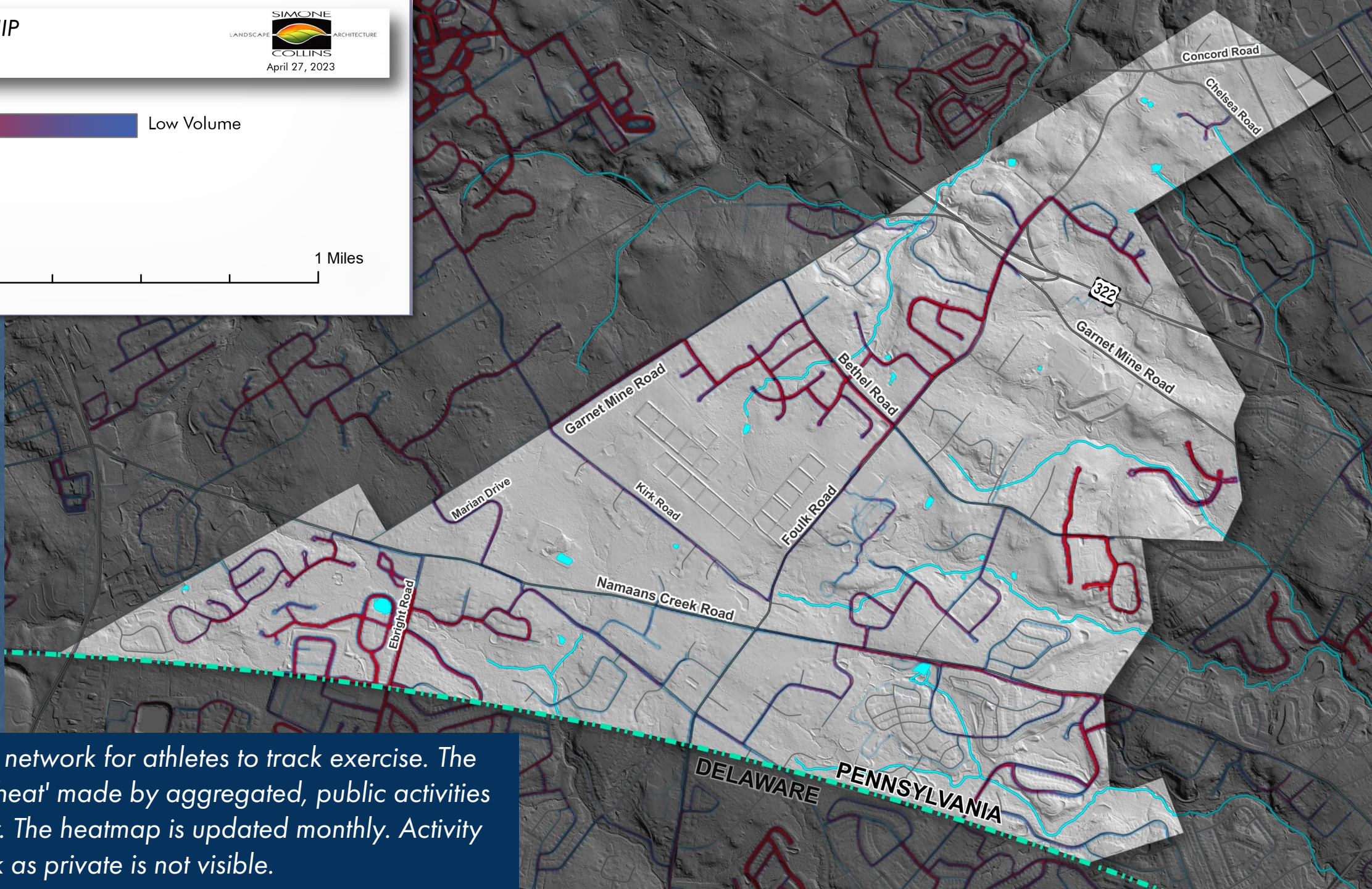
BETHEL TOWNSHIP STRAVA Run Map



High Volume  Low Volume



0  1 Miles



Strava is a social network for athletes to track exercise. The heatmap shows 'heat' made by aggregated, public activities over the last year. The heatmap is updated monthly. Activity that athletes mark as private is not visible.

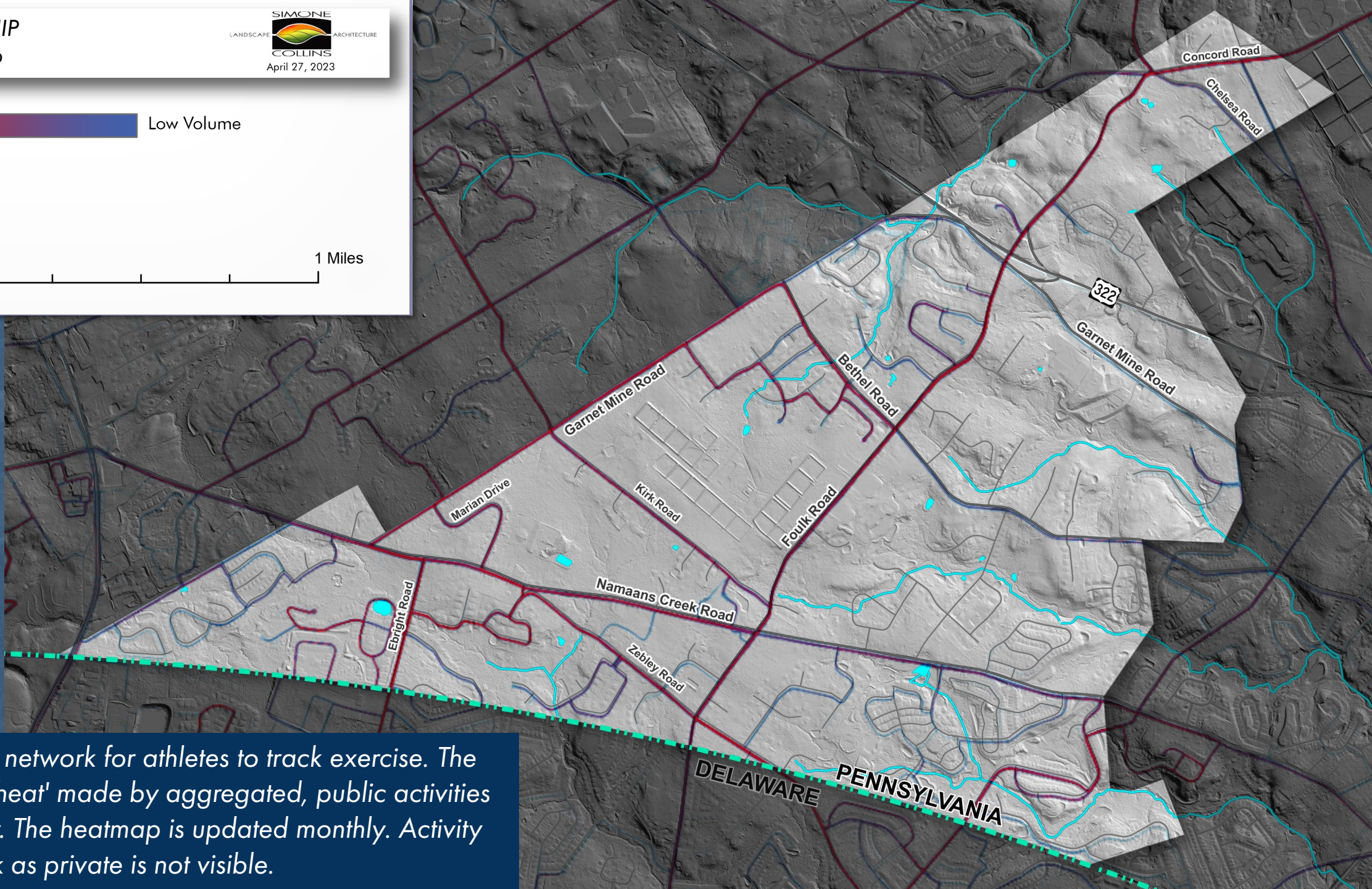
BETHEL TOWNSHIP STRAVA Ride Map

SIMONE
LANDSCAPE ARCHITECTURE
COLLINS
April 27, 2023

High Volume  Low Volume



0  1 Miles



Strava is a social network for athletes to track exercise. The heatmap shows 'heat' made by aggregated, public activities over the last year. The heatmap is updated monthly. Activity that athletes mark as private is not visible.

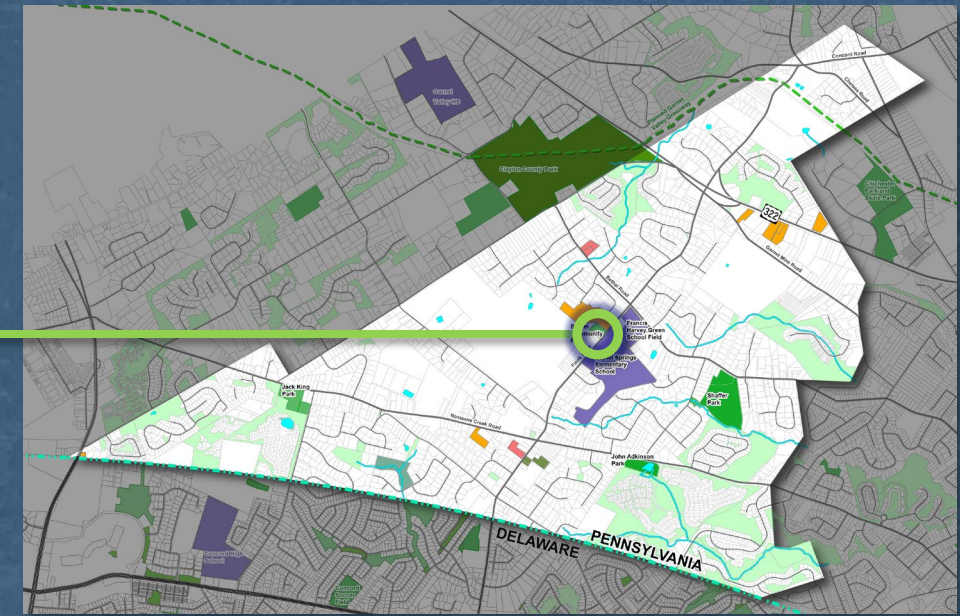
SITE VISIT

Parks & Open Space Plan

Site Visit

Bethel Community Park

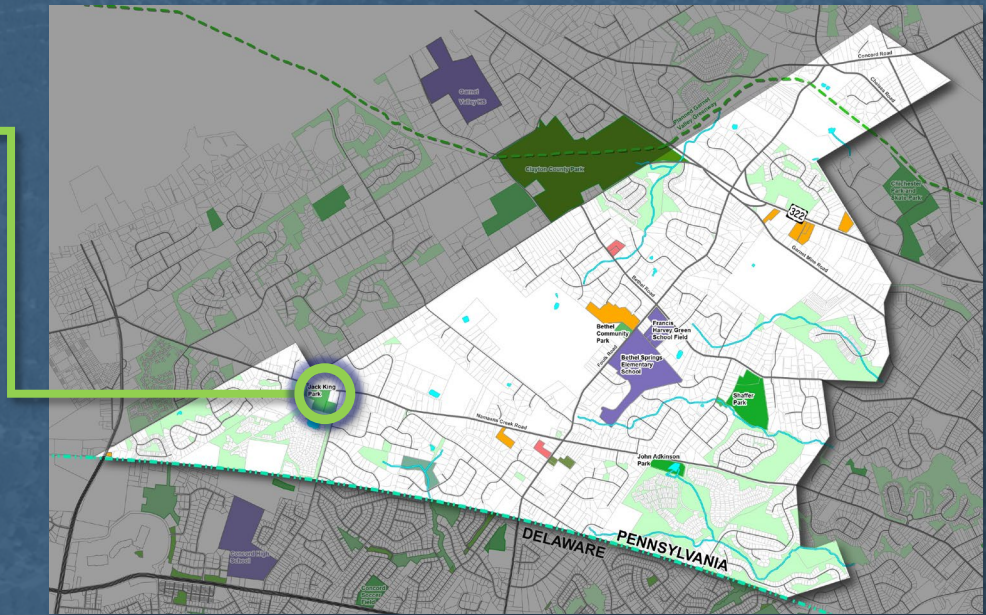
- 3 Tee Ball Fields (1 skinned, 2 grass infields) / Little Tykes soccer fields
- Shed
- ~60 Parking Spaces, 3 ADA



Site Visit

Jack King Park

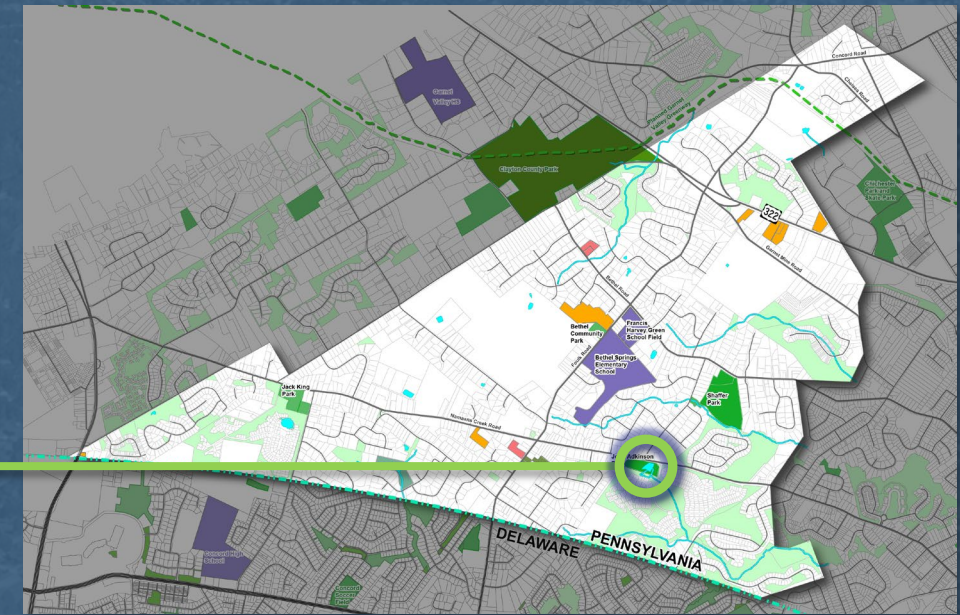
- Playground
- Walking Trail – Thompson Swamp
- 25 Parking Spaces, 2 ADA



Site Visit

John T. Adkinson Park

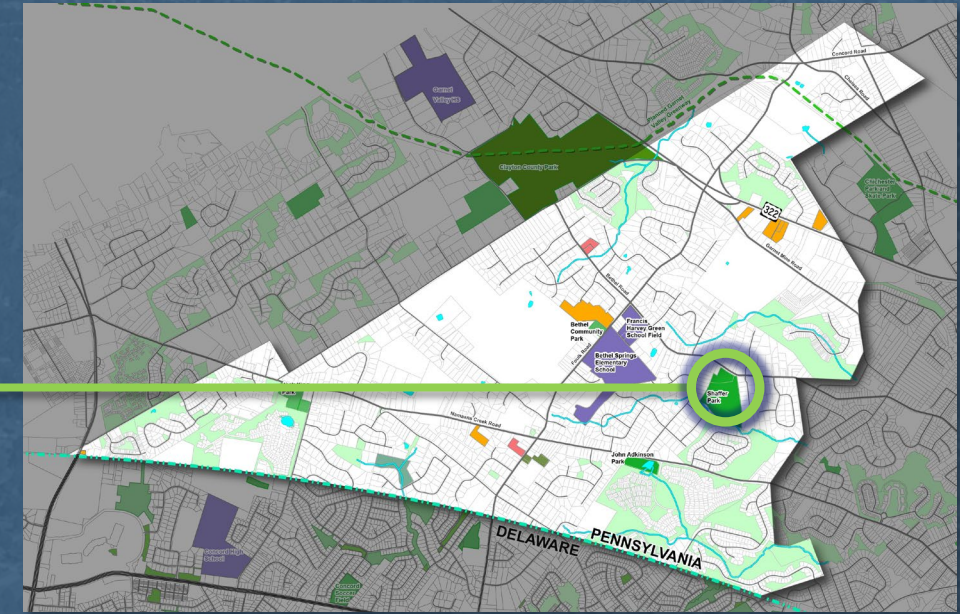
- Pond
- Gazebo
- Walking Trail, Fitness Stations
- 25 Parking Spaces, 2 ADA



Site Visit

Shaffer Park

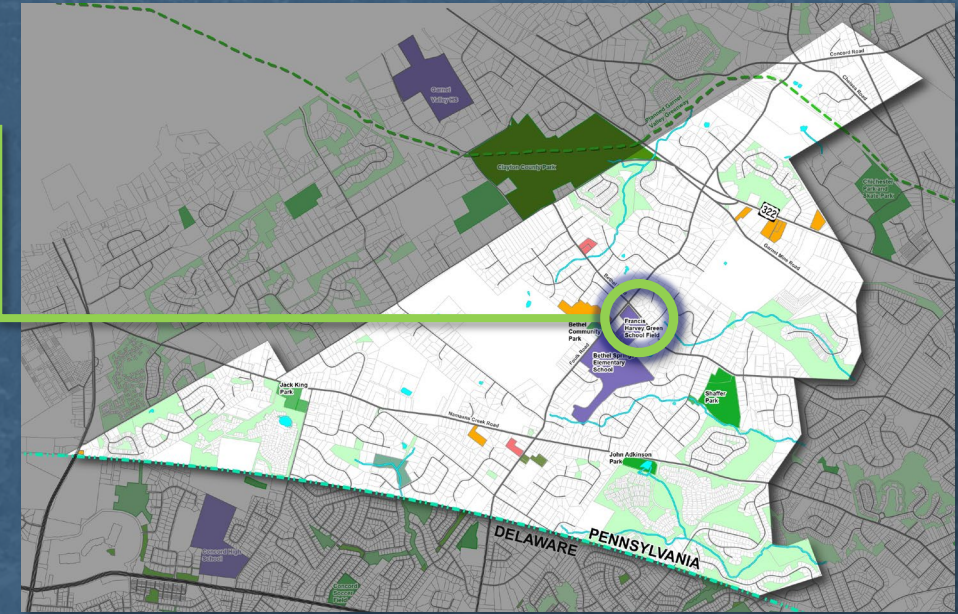
- Sloping site to Pond/Naaman's Creek
- Meadows and woodlands
- No parking



Site Visit

Francis Harvey Green School Field

- Demolished in November 2010
- Land is owned by the School District





Brainstorming

Brainstorming

GOALS

Goals for the project — Initially broad, then specific

Facts – Approx. 9,500 residents, On the border with Delaware

FACTS

CONCEPTS

Ideas for attaining project goals – Opportunities for improvement

Partners – Groups, Businesses, Institutions to create a partnership with

PARTNERS

Brainstorming

- Parks and Open Space Plan Ideas

<u>GOALS</u>	<u>FACTS</u>	<u>CONCEPTS</u>	<u>PARTNERS</u>
Manage future Growth	Recently Acquired Shaffer Site	Park Connection Routes	Delaware County
Acquire Land for Parks/ Open Space	On the Border with Delaware	New Trails At Shaffer Site	Garnet Valley School District
Maintain Quality of Life	Regional Highway Access	Cohesive Wayfinding System	Local Businesses



Shaffer Park Design

Project Schedule

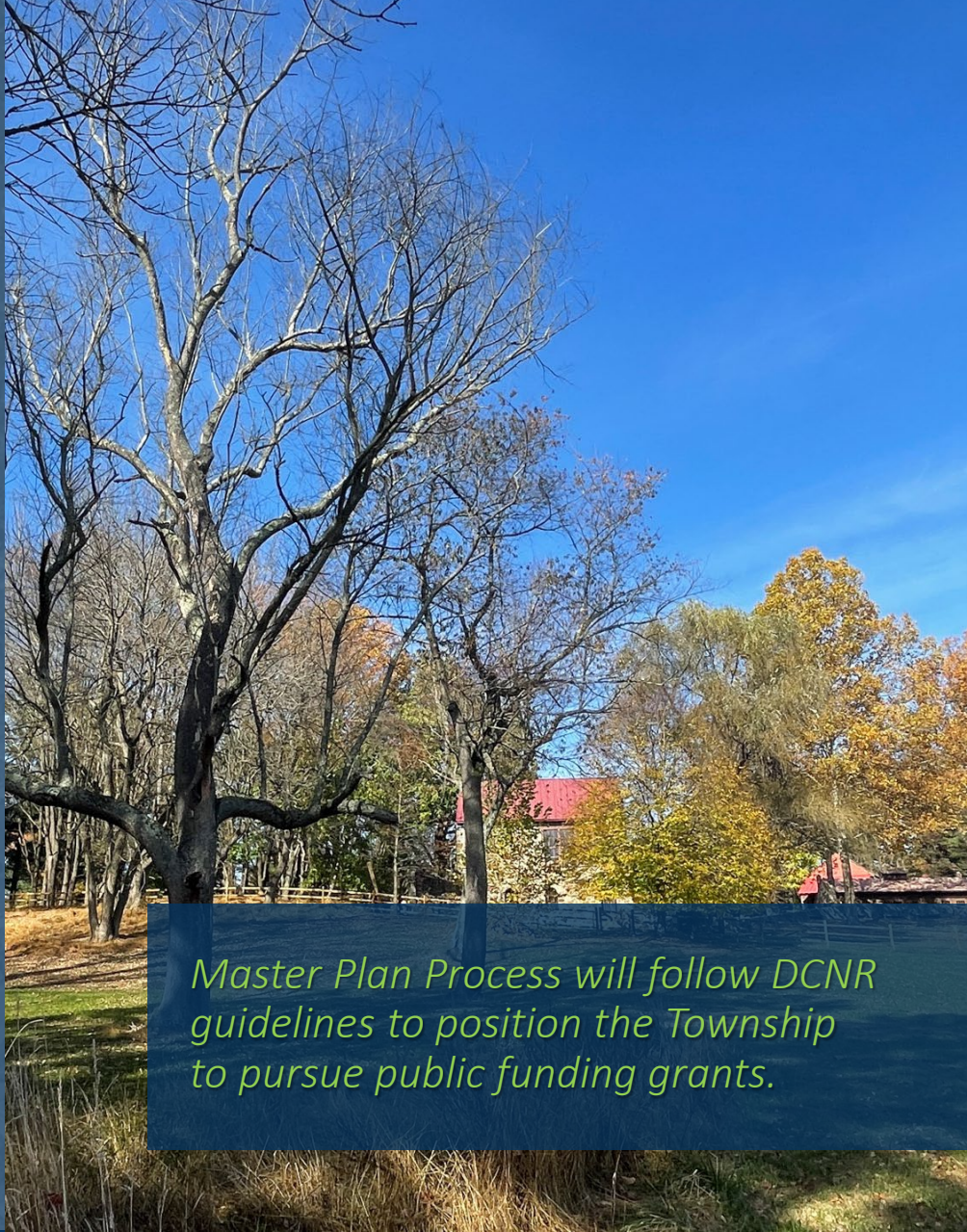
Bethel Township - Shaffer Park Design

Project	Meeting Type	Purpose	Date	Time
Parks & Open Space Plan / Shaffer Park	Committee Meeting #1	Planning & Design Process Overview Brainstorming	Thursday, March 16	7 – 9 PM
	<i>Key Person Interviews</i>		<i>Dates TBD</i>	
	<i>Web Based Survey</i>		<i>4/27/23 through 2/1/24</i>	
Parks & Open Space Plan / Shaffer Park	Public Meeting #1	Concept, Programming & Brainstorming	Thursday, April 27, 2023	7 – 9 PM
Parks & Open Space Plan / Shaffer Park	Committee Meeting #2	Work in Progress Reviews	Thursday, June 8, 2023	7 – 9 PM
Shaffer Park	Public Meeting #2	Pre-Final Concept	Thursday, August 24, 2023	7 – 9 PM
Shaffer Park	Board of Supervisors Meeting #1	Design Review	Tuesday, September 12, 2023	7 – 9 PM

Project Scope

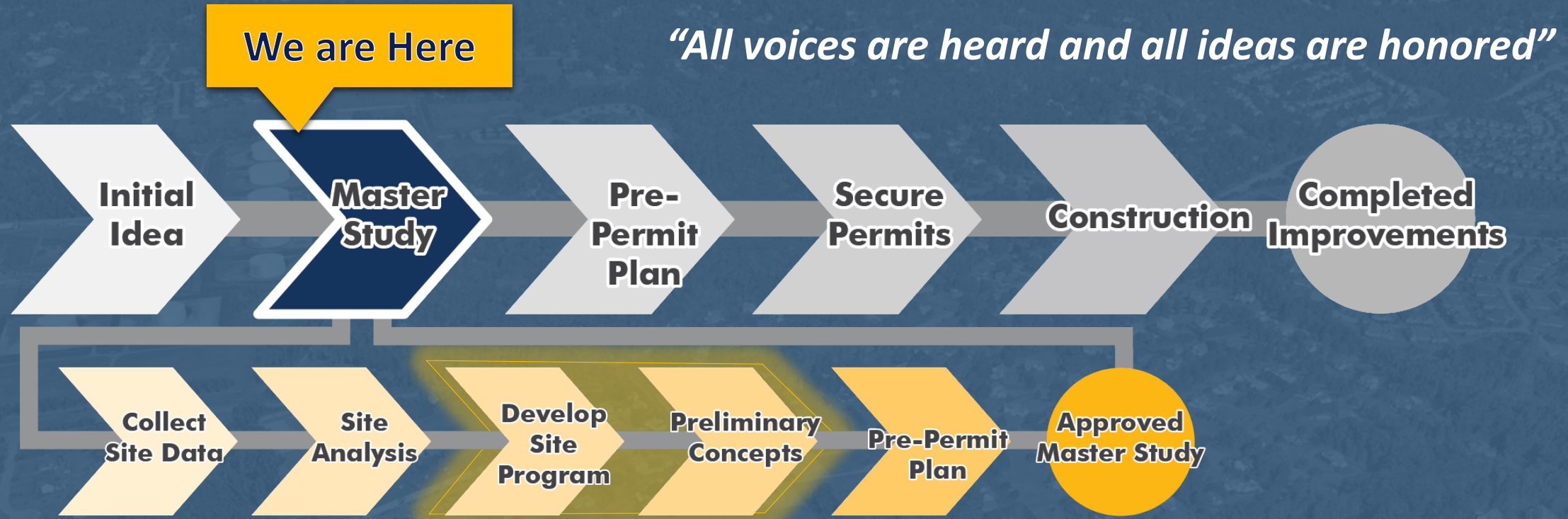
SHAFFER PARK DESIGN

- Site Reconnaissance
- Inventory & Analysis
 - Site & Environmental Analysis
- Public Participation
 - 2 Committee Meetings
 - 2 Public Meetings
 - Focus Group Interviews
 - Public Opinion Survey (4/27/23 – 2/1/24)
- Design Process & Recommendations
 - Program for Facilities & Activities
 - Plan Options
 - Draft/Final Plan
 - Construction Plans and Details
 - Cost Estimates



Master Plan Process will follow DCNR guidelines to position the Township to pursue public funding grants.

Shaffer Park Plan Process

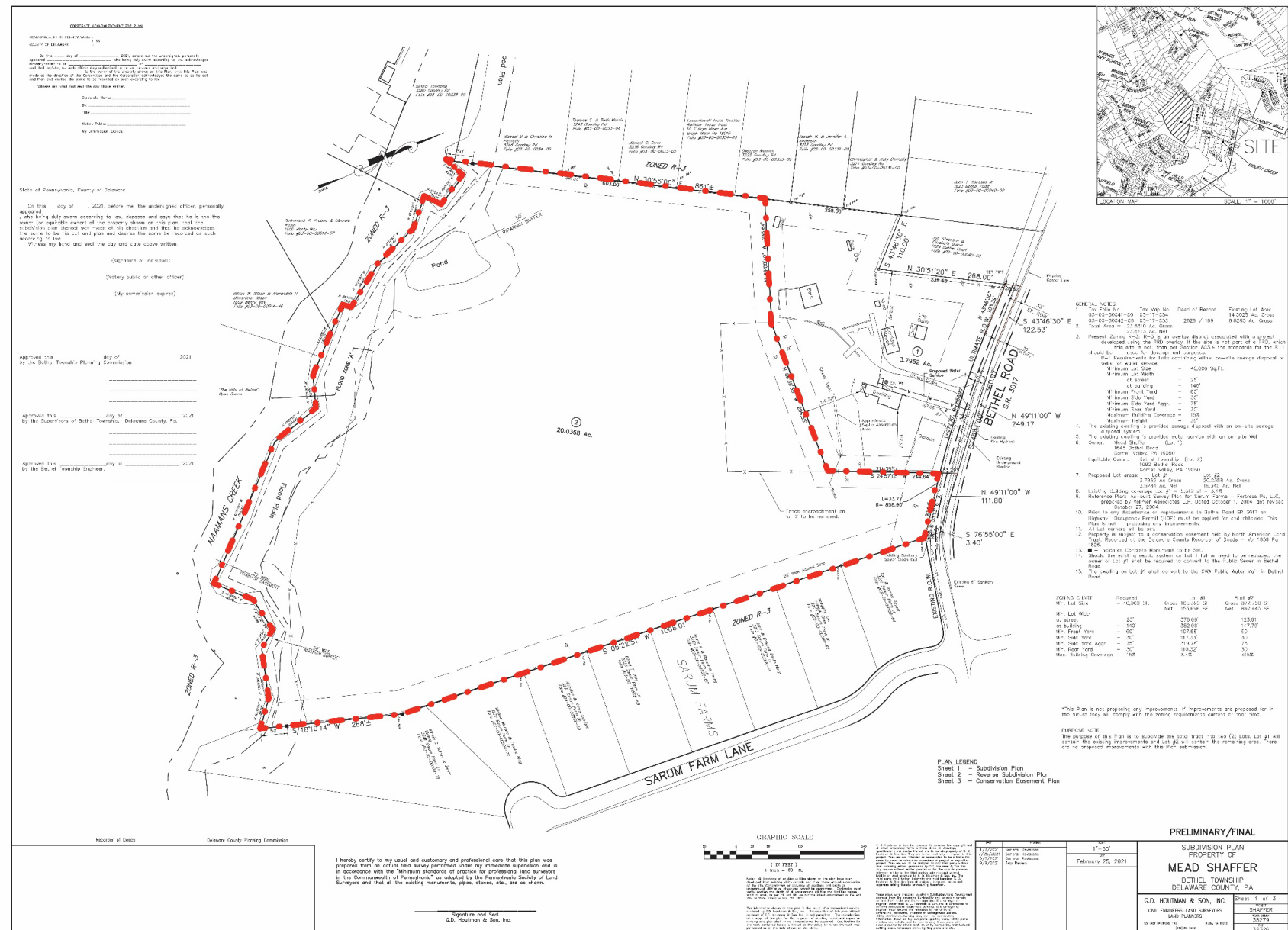


Transparent Public Outreach Process:

- 2 Public Meetings
- 2 Steering Committee Meetings
- 1 Board of Supervisors Meetings
- Web-based Public Opinion Survey
- Total Public Access to the SC Team During the Master Plan Process



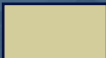



EXISTING DATA

Shaffer Park Design



Existing Data

Natural Features: Soils

-  **GnB2** – Glenville site loam, 3-8% slopes
-  **GsB** – Glenville very stoney silt loam, 0-8% slopes
-  **NaB2** – Neshaminy gravelly silt loam, 3-8 % slopes
-  **NaC2** – Neshaminy gravelly silt loam, 8-15 % slopes
-  **NaD3** – Neshaminy gravelly silt loam, 15-25 % slopes
-  **WoA** – Wockley fine sandy loam, 0 to 1 percent slopes



Existing Data

Natural Features: Tree Inventory



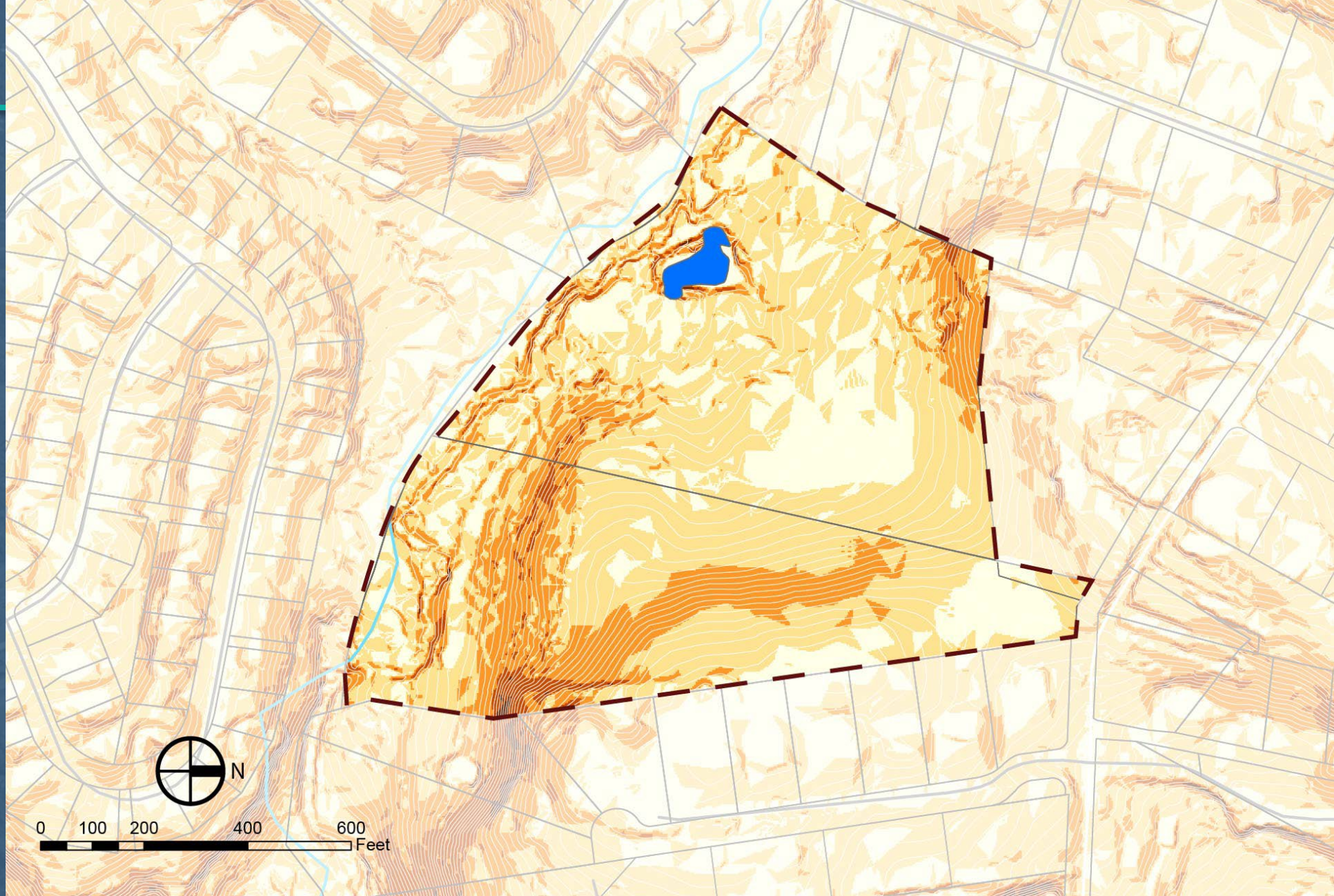
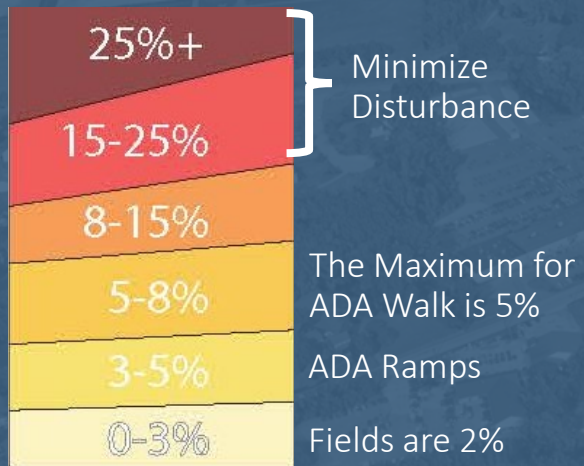
Natural Features: Wetlands



Existing Data

Natural Features: Slope

Legend



Existing Data

Conservation Easement



Existing Data

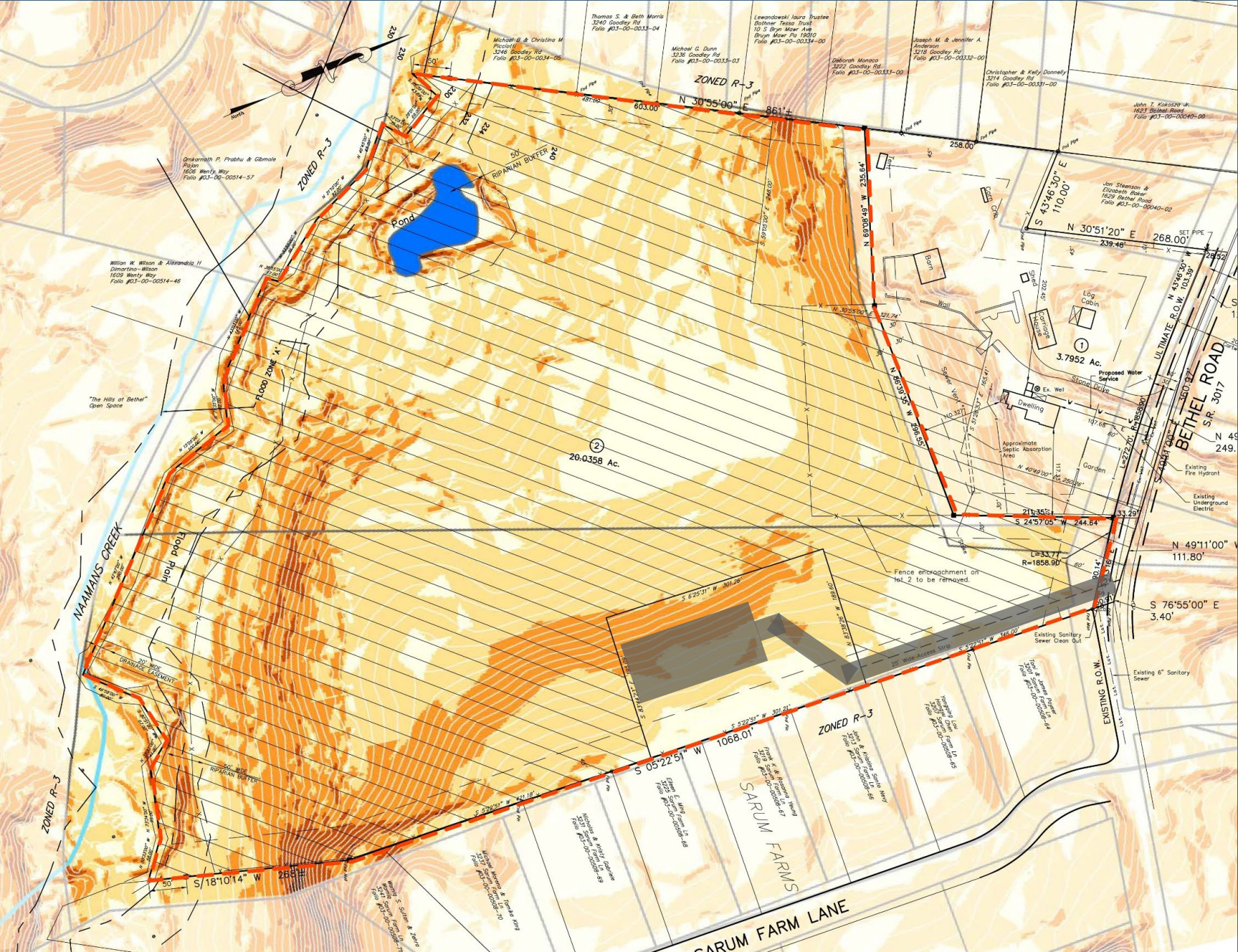
Conservation Easement

- Conservation easement only allows for passive recreation within the easement.
- It is ok to construct:
 - Interpretive trails for nature education
 - Covered picnic pavilions
 - Wayfinding and educational signage
 - Minor grading for passive use areas



Conservation Easement

Proposed parking area





SITE PHOTO TOUR

Shaffer Park Design

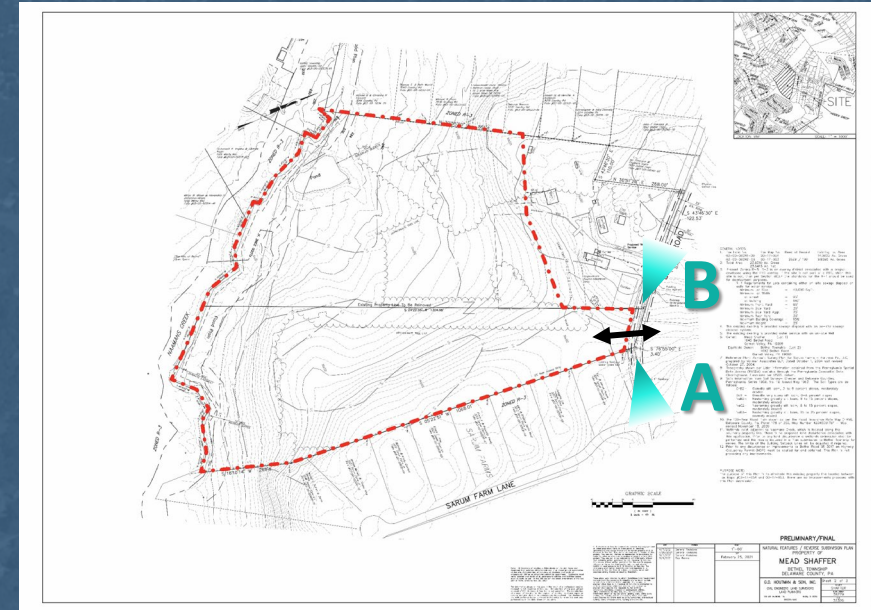
Site Visit



A From east



B From west uphill (limited sightlines)



Site Photo Tour



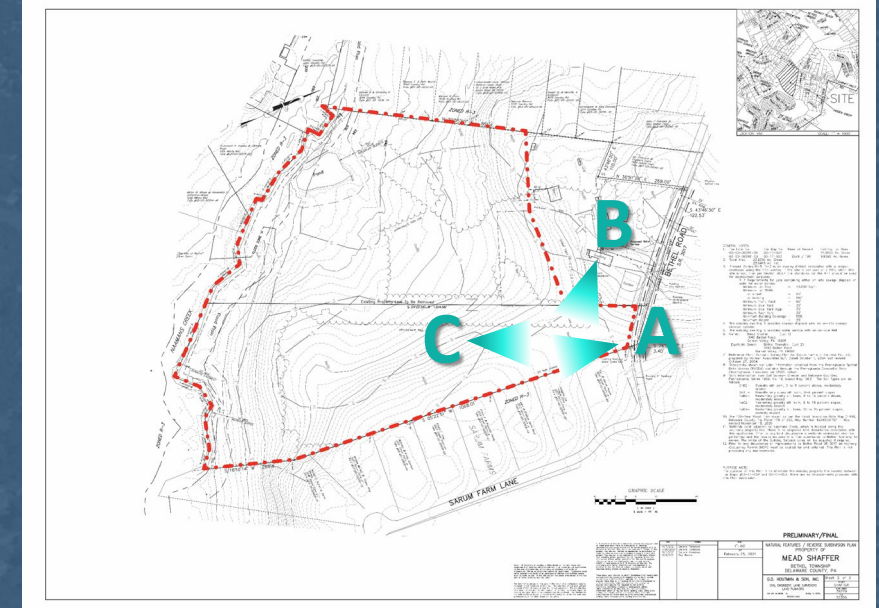
A Driveway easement, tree allée



B Neighboring residences



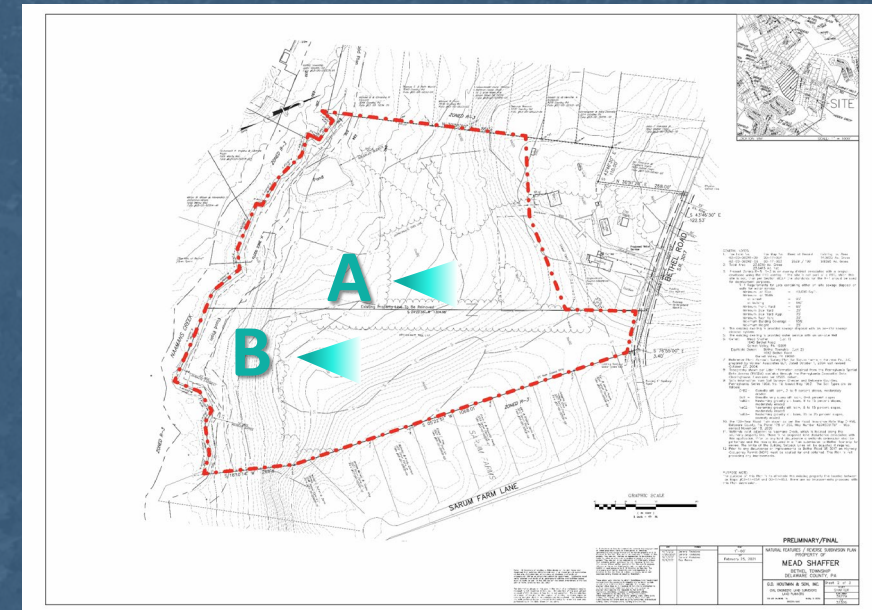
C Entrance from Bethel Road



Site Photo Tour



A Neighboring residence in distance



B Tree allée, slope

Site Photo Tour



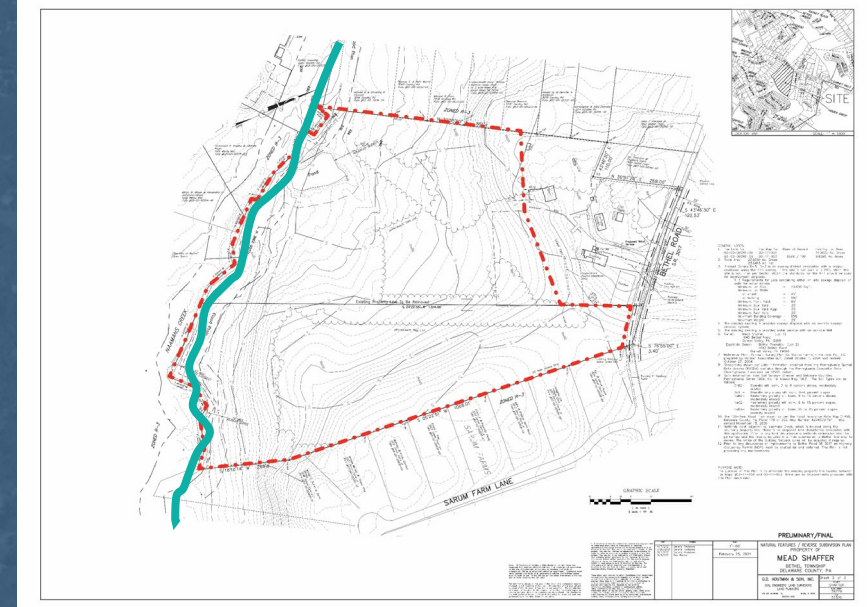
A Open Space, tree allée, neighboring residence, evergreen grove



B Flat, Open Space

Site Photo Tour

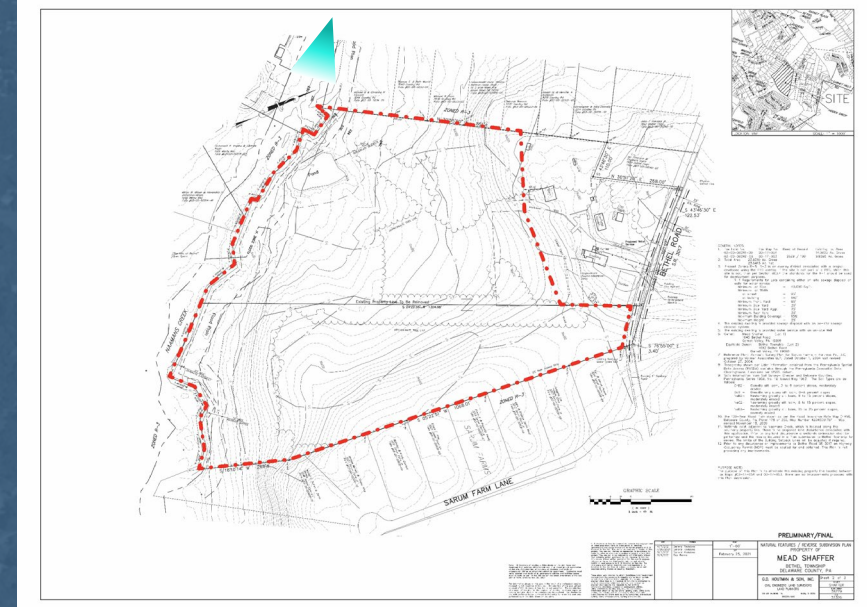
- Property line goes to center of Naaman's Creek
- The creek is fenced off



Site Photo Tour



Site Photo Tour





PRECEDENT PHOTOS

Shaffer Park Design

Ecological Elements



Reforestation



Meadow Restoration – Spring/Summer



Meadow Restoration – Fall/Winter

Restroom & Pavilions



Seating Areas



Log bench



Boulder bench



Traditional bench

Paths & Boardwalk



ADA Paved Trail



Hiking



Single Track Hiking



Stone Dust Trail



Mown Meadow Trail



Boardwalk

Boardwalk



Demonstration Garden & Community Garden



Swing/ Hammock Grove



Outdoor Classroom



Sculptures





CONCEPT

Shaffer Park Design

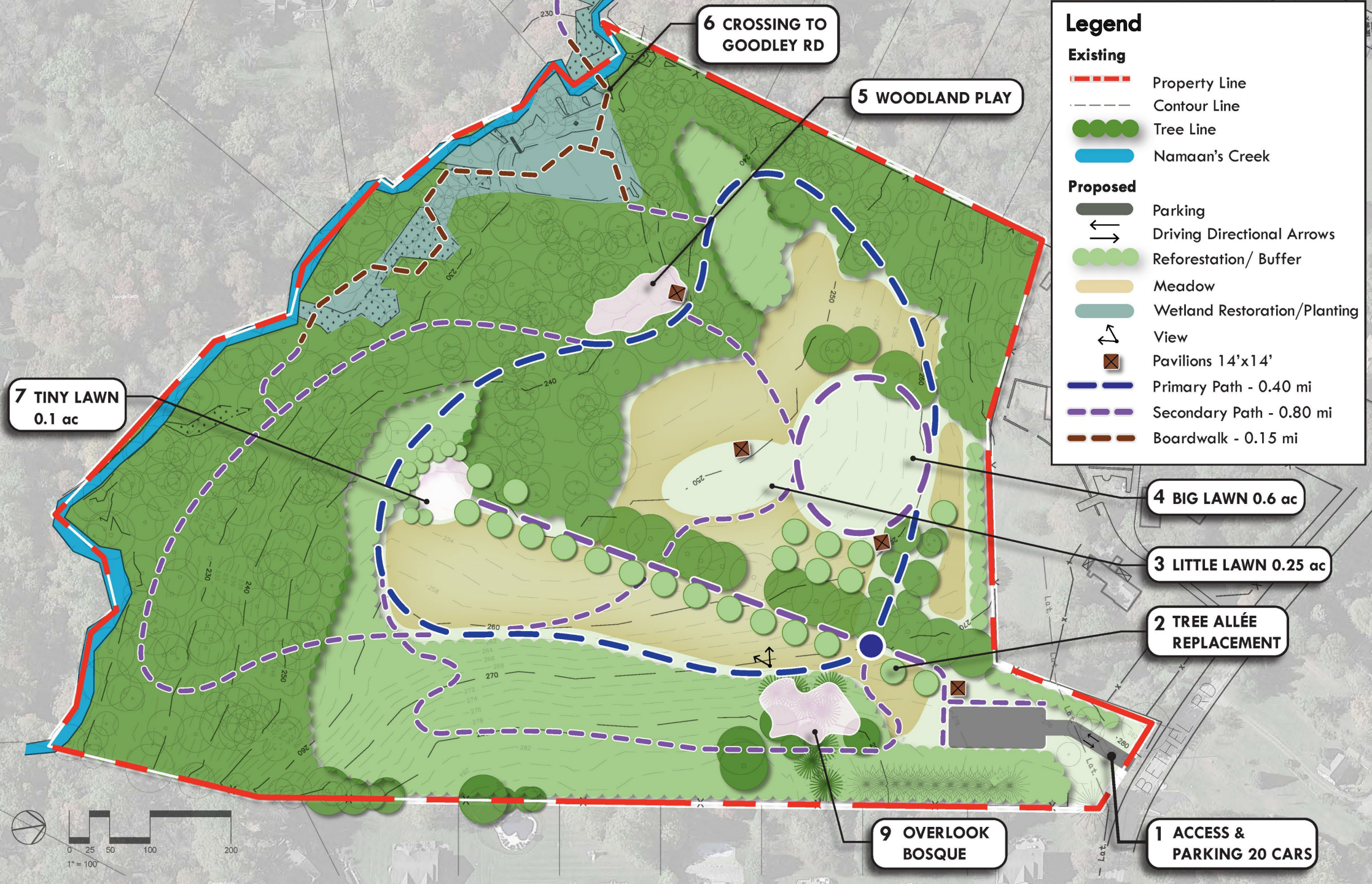
Legend

Existing

- Property Line
- Contour Line
- Tree Line
- Namaan's Creek

Proposed

- Parking
- Driving Directional Arrows
- Reforestation/ Buffer
- Meadow
- Wetland Restoration/Planting
- View
- Pavilions 14'x14'
- Primary Path - 0.40 mi
- Secondary Path - 0.80 mi
- Boardwalk - 0.15 mi



Goodley Rd Parcel Access Option

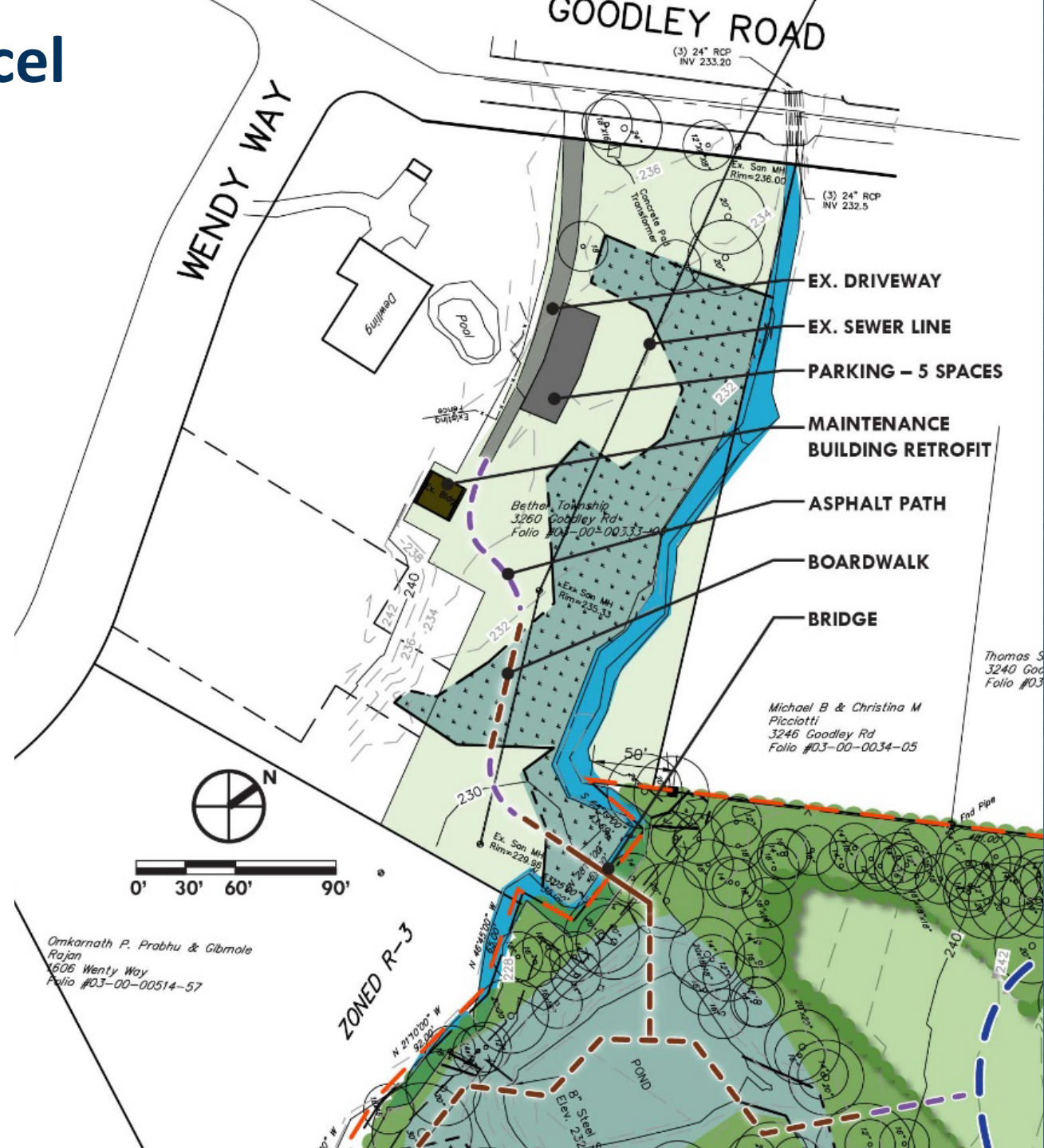
Legend

Existing

- Property Line
- Contour Line
- Tree Line

Proposed

- Parking
- ← → Driving Directional Arrows
- Reforestation
- ↗ View
- Pavilion
- Primary ADA Path
- Secondary ADA Path
- Non ADA Path
- Boardwalk





Brainstorming

Brainstorming

GOALS

Goals for the project — Initially broad, then specific

Facts – Approx. 9,500 residents, On the border with Delaware

FACTS

CONCEPTS

Ideas for attaining project goals – Opportunities for improvement

Partners – Groups, Businesses, Institutions to create a partnership with

PARTNERS

Brainstorming

- Shaffer Park Design Ideas

<u>GOALS</u>	<u>FACTS</u>	<u>CONCEPTS</u>	<u>PARTNERS</u>
Accessibility for All	Existing Meadow	Picnic Areas	Scout Troops
Create Safe Connections	Neighboring Residents	Educational Signage	Garnet Valley School District
Preserve Ex. Wildlife	Rolling Topography	Hammock Swing Area	Environmental Groups

Next Steps

Bethel Township - Parks & Open Space Plan and Shaffer Park Design

Project	Meeting Type	Purpose	Date	Time
	<i>Web Based Survey</i>		<i>3/1/23 through 2/1/24</i>	
Parks & Open Space Plan / Shaffer Design	Committee Meeting #1	Planning & Design Process Overview Brainstorming	Thursday, March 16	7 – 9 PM
	<i>Key Person Interviews (10)</i>		<i>Dates TBD</i>	
Parks & Open Space Plan / Shaffer Design	Public Meeting #1	Programming & Brainstorming	Thursday, April 27, 2023	7 – 9 PM
Parks & Open Space Plan / Shaffer Design	Committee Meeting #2	Work in Progress Reviews	Thursday, June 8, 2023	7 – 9 PM
Shaffer Park	Public Meeting #2	Initial Concepts	Thursday, August 24, 2023	7 – 9 PM
Parks & Open Space Plan	Committee Meeting #3	Initial Concepts Preview	Thursday, November 9, 2023	7 – 9 PM
Parks & Open Space Plan	Committee Meeting #4	Draft Plan Preview	Thursday, February 8, 2024	7 – 9 PM
Parks & Open Space Plan	Public Meeting #2	Initial Concepts	Thursday, March 21, 2024	7 – 9 PM
Shaffer Design	Board of Supervisors Meeting #1	Draft Plan Review	Tuesday, September 12, 2023	7 – 9 PM
Parks & Open Space Plan / Shaffer Design	Board of Supervisors Meeting #2	Draft Plan Review		
Parks & Open Space Plan / Shaffer Design	Board of Supervisors Meeting #3	Final Plan Review	Tuesday, June 11, 2024	7 – 9 PM

Next Committee Meeting

- Steering Committee Meeting #2
 - June 8th, 2023
7:00 to 9:00 PM
 - Two Parts:
 - **Parks and Open Space Plan** – review analysis and preliminary recommendations
 - **Shaffer Park Design** – review Draft Plan



Web-Based Opinion Survey

- Comments have been received and are in process of being applied to the survey
- Opening survey on April 27th – Public Meeting #1



Bethel Township Parks and Open Space Plan / Shaffer Park Design

This survey will inform the development of the Parks and Open Space Plan and the design for Shaffer Park for Bethel Township, in Delaware County.

The parks and open space plan will examine the use of existing open space and recreation facilities in Bethel Township and explore opportunities for new facility development, recreational trails and recreational programming to meet the needs of the current community while also planning for

Upcoming Public Meeting

- Thursday, August 24th at 7PM–9PM
- Please share the public meeting poster with your friends and neighbors.
- SC will email PDF version for forwarding/printing and a JPG version for posting to social media once finalized.



Thank you!

Please feel free to contact us anytime:

Simone Collins Landscape Architecture: (610) 239-7601

Peter Simone, RLA, FASLA, Principal
psimone@simonecollins.com

Emma Haley, Project Manager
ehaley@simonecollins.com

Liz Krohn, Staff Landscape Architect
ekrohn@simonecollins.com